

Initial Log-In Procedures

For ECFR Firehouse Web

ECFR FH Web Log-In Procedure

- **Firehouse Web** can be accessed from any internet connected CPU. You do not have to be inside the county network.
- To access **Firehouse Web for ECFR**, do the following.
 - Go to: <http://fh.co.escambia.fl.us/fhweb/>
 - This can be accessed as a “Link” from the county home page, or entered manually.

ECFR FH Web (Initial Screen) Displayed

FH Web - Microsoft Internet Explorer provided by Escambia County



http://fh.co.escambia.fl.us/fhweb/


File Edit View Favorites Tools Help

Favorites Suggested Sites Web Slice Gallery

FH FH Web

Home RSS Print Page Safety Tools





Welcome

Welcome to FH Web, a web-enabled version of FIREHOUSE Software®.

Getting Started

Make a selection to the right based on your default browser, and whether you wish to enable or disable FH Web printing services.

Support

1-800-921-5300
fhweb@acs-inc.com
Firehousesoftware.com

MON - FRI 7AM - 7PM CST
SAT 8AM - 12PM CST

[Useful Links](#)

[ActiveX - Default Printer](#)

[ActiveX - All Printers](#)

[ActiveX - Multi-Monitor](#)

[ActiveX - No Printers](#)

[Java - Server Printers](#)

[Java - No Printers](#)

Copyright 2005-2008 [Affiliated Computer Services](#), [FIREHOUSE Software](#). All Rights Reserved.

start Jonathan D Holli... FH Web - Micros... Presentation1 Hydrant Master ... Intro to Firehou... FH Web Training... 1:25 PM

ECFR FH Web Log-In Procedure

- On the initial log-in screen, Click on the following:
 - For ALL Windows based CPU's, use the “Active X” selections.
 - If you do not plan to print anything, select “Active X – No Printers”.
 - If you do plan to print, select “Active X – All Printers”. This will show a list of all available printers when needed, allowing you to select the correct one.
 - If you have a dual or split screen CPU, select “Active X – Multi Monitor”. This will keep the display on only 1 screen, and still allow printing.

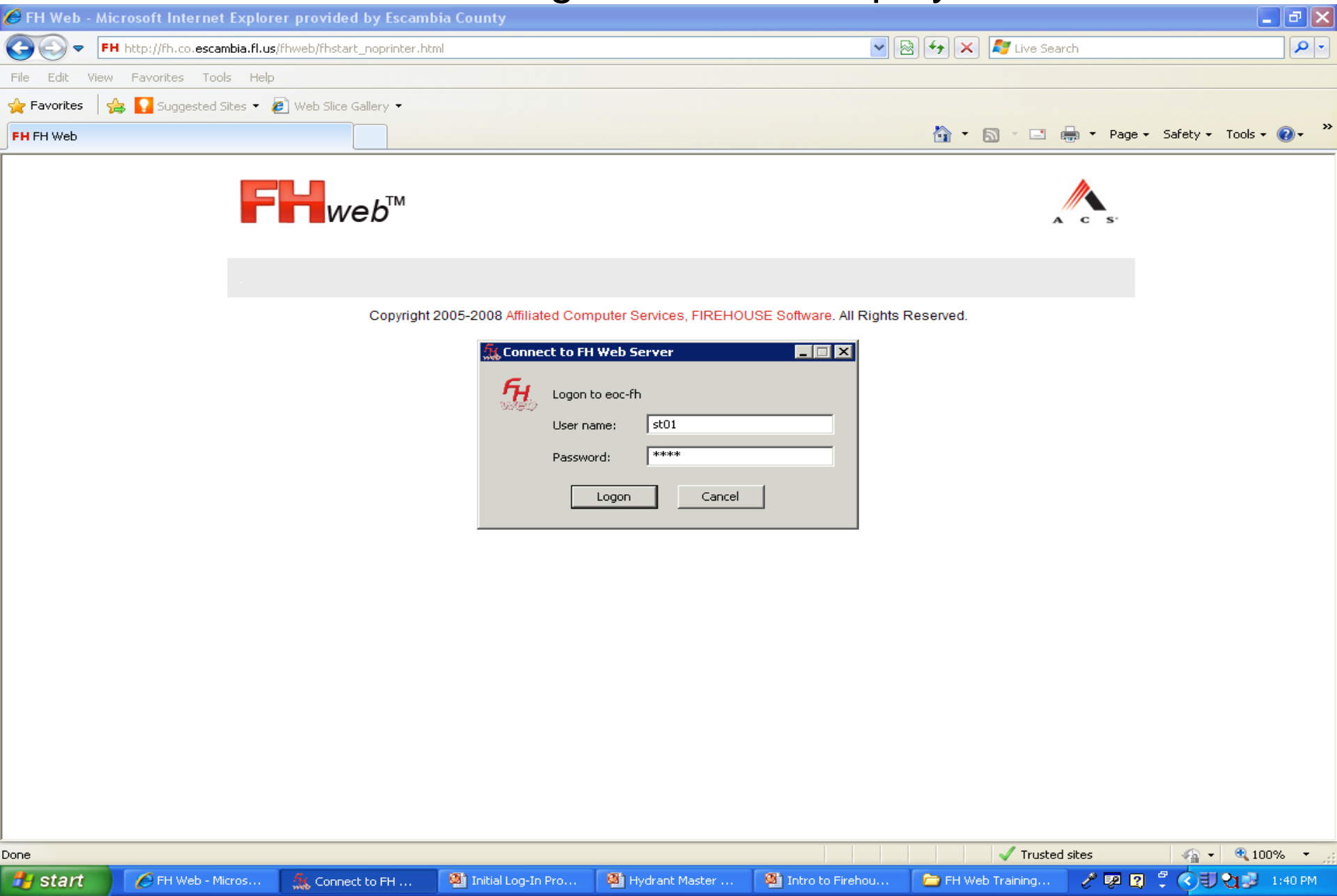
ECFR FH Web Log-In Procedure

- For non-windows based CPU's, you must use the “Java” selections at the bottom of the list.
 - This method should only be used if necessary. The “Java” version is slower and does not display as large as the “Active X”, making data entry more difficult.
 - Some newer versions of Windows do not automatically accept “Active X” controls, and will prompt you with a warning screen asking if it is ok to install.
 - You must select “yes” or “run” and allow “Active X” controls to install, the 1st time you run FH Web.

ECFR FH Web Log-In Procedure

- Once you make your selection, the “Station Log-In” screen will appear. Use the following to log-in:
 - For all operations personnel, enter (**st**) + the (**2 digit**) station number you are at, **lower case**, for username and password.
 - **Station 1** = (st01) (st01)
 - **Station 15** = (st15) (st15)
 - **Admin** = (fsadmin) (fsadmin)
 - **Inspections** = (fsinsp) (fsinsp)

“Station Log-In” Screen Displayed



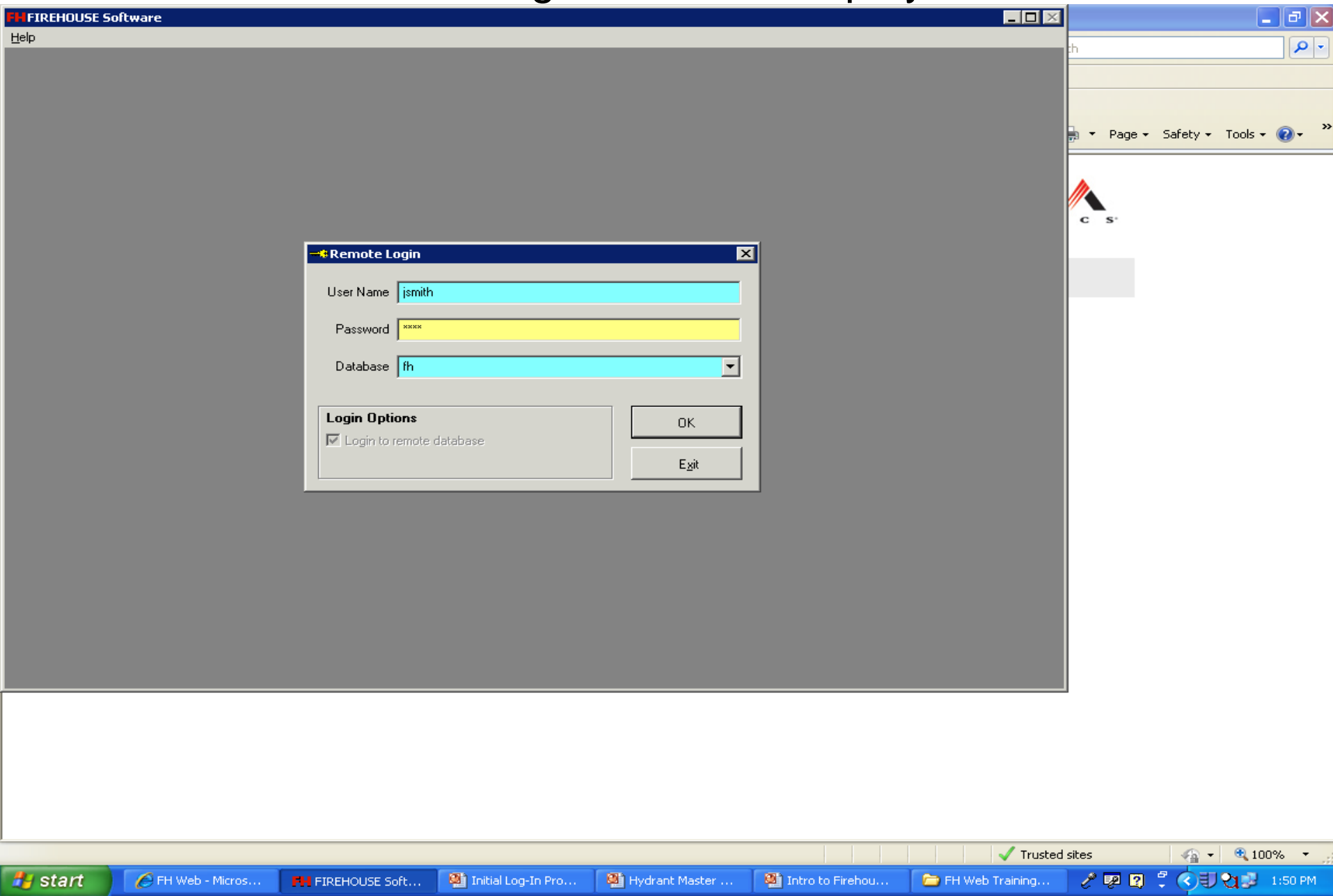
ECFR FH Web Log-In Procedure

- The purpose of the “Station Log-In” screen is to make the data at your station the “default” for the session.
 - This will save you time when searching for Apparatus, Personnel, Calls, Training etc.
 - All of the “default” search queries and rosters will be from the station you logged in at.
 - You can log in to any station, from anywhere. Just remember, the “default” data will be the station number you enter, on log-in.

ECFR FH Web Log-In Procedure

- Individual “User Log-In Screen”.
 - Once you enter the “Station Log-In” data, you will be taken to the User Log-In. This screen is where you enter your personal username and password.
 - All new members should be set-up in the system as follows:
 - Username= Lowercase (1st initial, last name) No spaces.
 - Password= (1234)
 - You will be prompted to change your password on initial log-in.
 - For some older users, their username was (1st initial, middle initial, 1st five of last name).
 - If you are unable to log-in, please e-mail us and we will verify your account.

“User Log-In” screen Displayed



ECFR FH Web Log-In Procedure

- For training purposes, we have a “Training” database, that can be used for practice without corrupting or damaging live data. To log-in to the training database do the following:
 - From the “User Log-In” screen, go to the bottom line that says “Database”.
 - Change the database from (fh) to (FH_Training).
 - Use 1 of the following to log-in:
 - Username: (trainingdc), (traininglt), or (trainingff) based on rank you wish to have “practice access” at.
 - Password (1234)

Display of “Training Version” Log-In Screen

FH FIREHOUSE Software

Help



Remote Login

User Name

Password

Database

Login Options

☒ Login to remote database

OK

Exit

ECFR FH Web Log-In Procedure

- The “Training” version, will not corrupt “live” data, and can be used by anyone safely for practice.
 - You will also not be able to log-in to this database with your real password. This will prevent users from “**accidentally**” logging-in to the wrong database to enter “**live**” data.
 - Data stored in “**training**” accidentally will not be available in the real version of FH Web, so **ONLY** use it for practice if needed.

ECFR FH Web Log-In Procedure

- Once you complete the “User Log-In”, the “Main” FH Web screen will display.
 - From here you can access all available functions within FH Web.
 - The “Default” initial view includes a blank “NFIRS” report and “Department Journal”. You may close these if not needed.
 - See All: (Individual Section’s Users Guides) for more information.

FH Web “Main Screen” on start-up is Displayed

FH - FIREHOUSE Software 7.2.11 (Remote)

File Edit Reports Graphs Maps Tools Administration Form Window Help

Incident Investigation Occupancy Inspect Staff Activity Training Program Inventory Hydrant Message Journal

Memoriz Recall Renum

Department Journal

November 2011

Tue Nov 8, 2011

Sun	Mon	Tue	Wed	Thu	Fri	Sat
		1	2	3	4	5
6	7					
13	14	15	16	17	18	19
20	21	22	23	24	25	26
27	28	29	30			

NFIRS Incident Report

FDID: 09023 Alarm Date: 11/08/2011 Alarm Time: : : Incident Number: - Exposure: 000 Station: 01 Occupancy ID:

Basic Units & Personnel Response Property & Involvement Additional Reports Incident Narrative Other... ☐ Override Lock

Scene Address

Type: Street Address

Vicinity: Exact Location

☐ Address on Wildland Report

Aid Given or Received

City: Pensacola State: FL ZIP Code: 32526 Census Tract: .

Specific Property Use

Incident Type

Shifts & Alarms

Shift: Alarms: 1

Supplemental Address...

Times

Dispatch Notif: : : First Arr Scene: : : Controlled: : : Last Clr Scene: : :

Actions Taken

Code	Description

Shifts & Alarms

District: 01 Bellview

911 Used: 1 Escambia 911

Type of Alarm: 2 Regular

New Browse Save Delete Print... Close

start FH Web - Micros... FH - FIREHOUSE ... Initial Log-In Pro... Hydrant Master ... Intro to Firehou... FH Web Training... 2:07 PM

ECFR FH Web Log-In Procedure

- This concludes this Users Guide.
 - For more info on “Log-In” procedures, contact FH Web Administration.